

Transfemoral DSS (Digital Socket System)

FABRICATION ORDER

PATIENT INFORMATION		WORK ORDER NO.		CUSTOMER INFORMATION		DATE RECEIVED	DATE NEEDED	SHIPPING METHOD
NAME				FACILITY			ACCOUNT #	
HEIGHT	WEIGHT	AGE	PRACTITIONER					
SEX	ACTIVITY LEVEL	AFFECTED SIDE <input type="checkbox"/> LEFT <input type="checkbox"/> RIGHT	E-MAIL ADDRESS				PHONE NUMBER	

MATERIAL

- PP
- DIACLEAR
- PE
- FLEXOFORM
- ACRYLIC

PIN LOCK TYPE (IF USED)

OTHER _____

SUSPENSION

DISTAL END OPTION

- FITTED INJECTION VOID

SOCKET DESIGN

- RAMUS CONTAINMENT
- SABOLICH TYPE MILD IC
- NARROW M/L QUAD
- OTHER _____

DESIGN YOUR OWN TEMPLATE

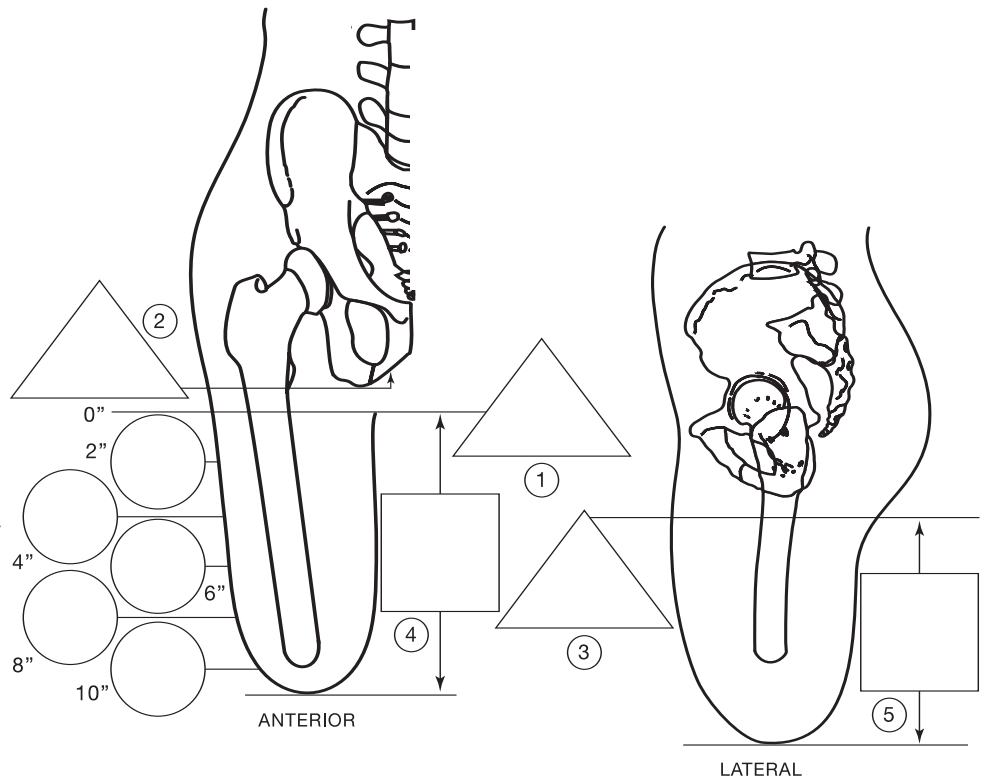
TEMPLATE NAME _____

ELECTRONIC FILE, CAST OR SOCKET MUST BE SENT IN TO USE AS TEMPLATE MODEL

OTHER COMPONENTS

SPECIAL INSTRUCTIONS

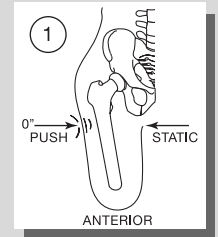
1. M/L PERINEUM TO FEMUR (THIS IS ZERO POINT)
 2. M/L RAMUS TO SUBTROCHANTER
 3. A/P SCARPUS TO GLUTEAL FOLD
 4. LENGTH PERINEUM DISTAL END
 5. LENGTH GLUTEAL FOLD TO DISTAL END
 6. GLUTEAL DEVELOPMENT: SM MED LG
 7. TISSUE DENSITY: SOFT MED FIRM
- IF LINER IS TO BE USED, MEASUREMENTS ARE TAKEN OVER LINER



Transfemoral DSS Instructions

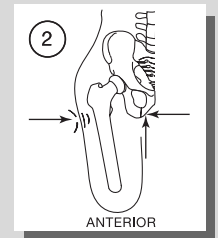
1. M/L PERINEUM TO FEMUR

- Set static caliper of M/L Gauge at perineum, calipers perpendicular to line of progression.
- Have patient adduct residual limb.
- With Gauge level to the floor and medial caliper static, bring lateral caliper to femur. Compress soft tissue only; medial caliper should remain static and unaffected.
- Mark proximal edge of lateral caliper, this is zero.
- Record M/L measurement.



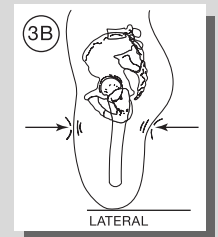
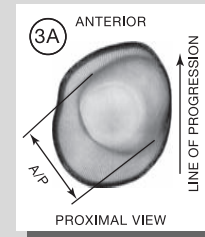
2. M/L IRC (ischial ramus complex) TO SUBTROCHANTER

- Set static caliper of M/L Gauge at medial border of IRC, calipers perpendicular to line of progression.
- Have patient adduct the residual limb.
- With Gauge level to the floor and medial caliper static, bring lateral caliper to subtrochanter; compress soft tissue only.
- Record M/L measurement.



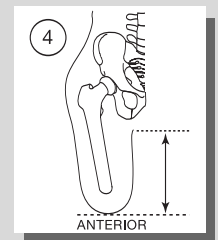
3. A/P SCARPUS TO GLUTEAL FOLD

- Have patient stand with limb in a relaxed natural flexion position.
- Place ruled edge of caliper medially with calipers facing laterally.
- Set static caliper of A/P gauge flat against the scarpus, push in to compress the soft tissue.
- Bring posterior caliper to the lateral aspect of the Gluteal Fold; slightly compress the soft tissue.
- Record measurement.



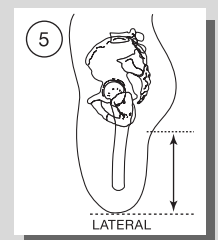
4. LENGTH FROM PERINEUM TO DISTAL END

- Measurement should be linear and not contoured to anatomy.
- Follow flexion angle of limb.



5. LENGTH FROM GLUTEAL FOLD TO DISTAL END

- Measurement should be linear and not contoured to anatomy.
- Follow flexion angle of limb.



6. GLUTEAL DEVELOPMENT

Small/Medium/Large

7. TISSUE DENSITY

Soft/Medium/Firm

8. CIRCUMFERENCES EVERY 2" STARTING AT 2"

Pull tape tight and then let tissue rebound, record that measurement.